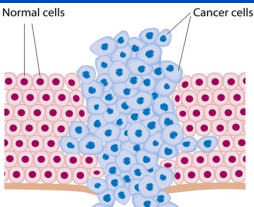


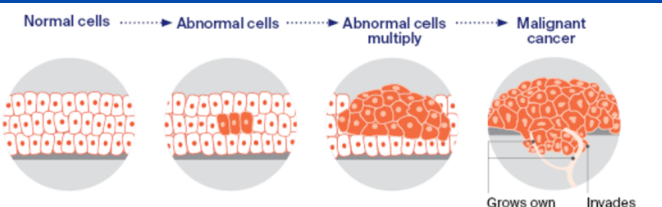
Status of Cancer in Nepal

What is cancer?

“Cancer is a large group of diseases that can start in almost any organ or tissue of the body when abnormal cells grow uncontrollably, go beyond their usual boundaries to invade adjoining parts of the body and/or spread to other organs.”



Source: Cancer Research UK (<https://www.cancerresearchuk.org/about-cancer/what-is-cancer/how-cancers-grow>)



Source: Cancer Council (<https://www.cancer.org.au/cancer-information/what-is-cancer>)

Cancer as a major NCD



CVDs kills 17.9 million people annually



Cancer kills 9.3 million people annually



COPD kills 4.1 million people annually

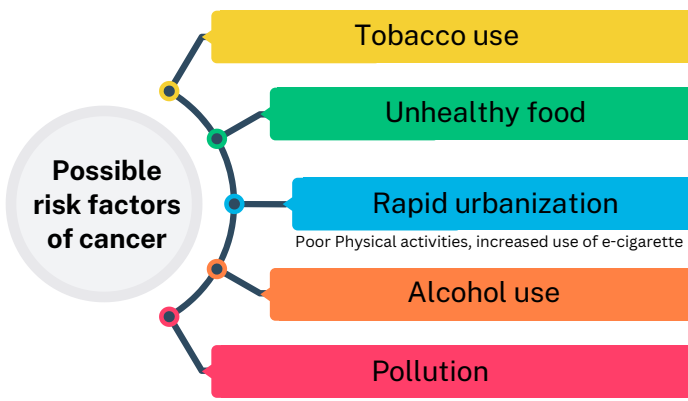


Diabetes kills 2.0 million people annually

Noncommunicable Diseases (NCDs) are responsible for death of 41 million people each year, equivalent to 74% of all deaths worldwide. Globally, cancer is the second major killer NCD after CVDs.

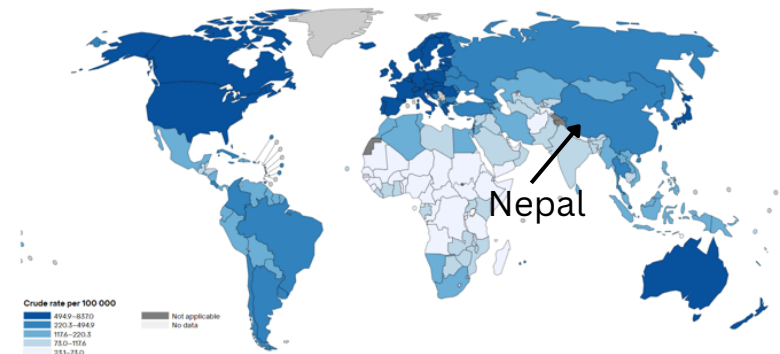
Source: WHO Fact Sheet on Noncommunicable diseases, 16th September 2023

Possible risk factors of cancer

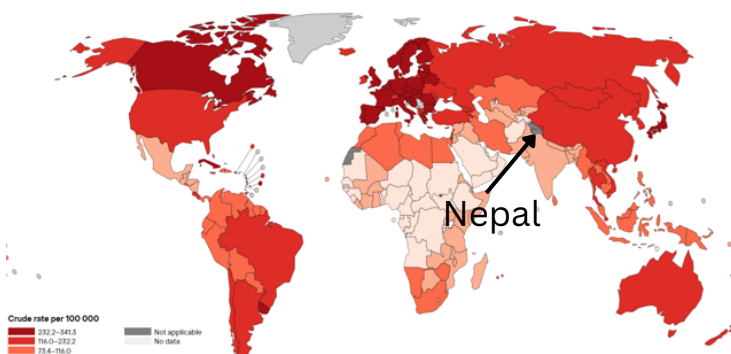


Burden of cancer

Cancer incidence rate (per 100,000 population)



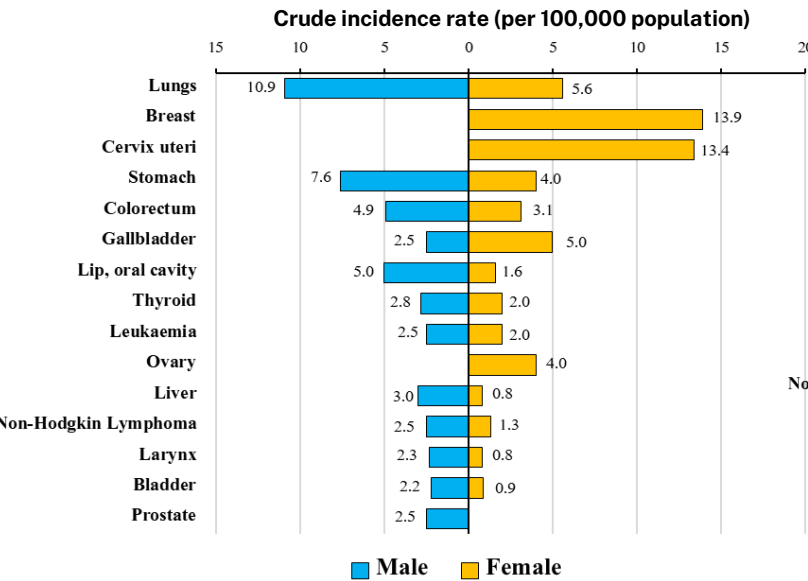
Cancer related mortality rate (per 100,000 population)



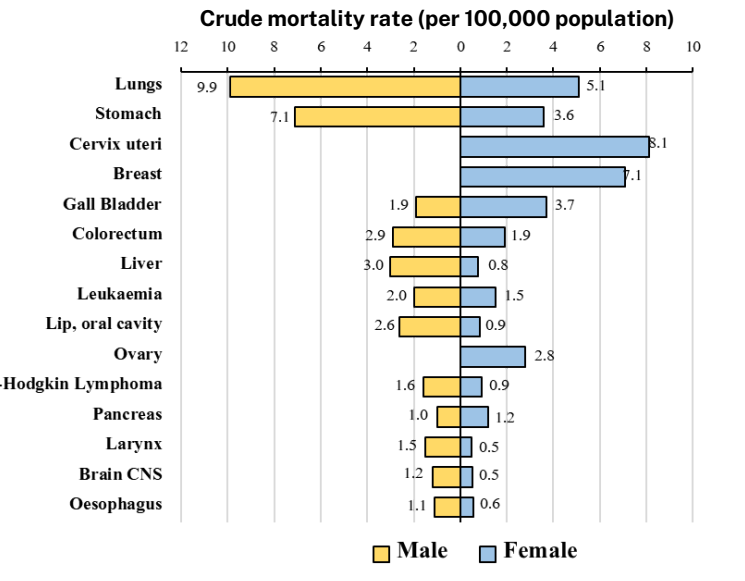
Estimated number in 2022	Nepal	South-east Asia	World
Number of new cases of cancer	22,008	11,46,810	1,99,76,499
Number of cancer related mortality	14,704	7,16,116	97,43,832
Crude incidence rate (per 100,000 population)	72.8	168.3	243.4
Crude mortality rate (per 100,000 population)	48.7	105.1	123.6

Source: nternational Agency for research on cancer (WHO), Cancer today, data version: Globocan 2022 - 08.02.2024

Major cancers in Nepal (Top 15)

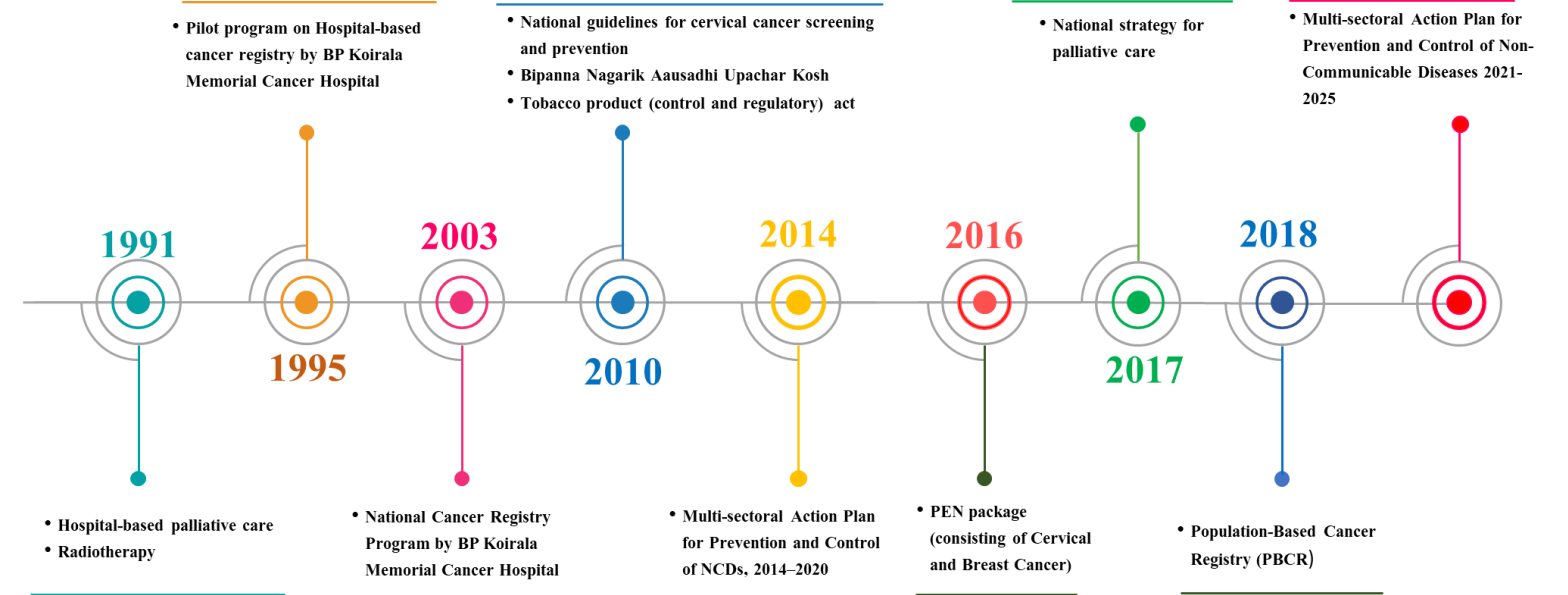


Source: International Agency for research on cancer (WHO), Cancer today, data version: Globocan 2022 - 08.02.2024



Source: International Agency for research on cancer (WHO), Cancer today, data version: Globocan 2022 - 08.02.2024

Key initiatives to address cancer in Nepal



Key Considerations

Program/Implementation <ul style="list-style-type: none">Expand radiation therapy services to all provinces in NepalCreate decentralized cancer infrastructure to enhance treatment quality and patient outcomes and measure the quality of services	Capacity strengthening <ul style="list-style-type: none">Invest in training programs for health professionals working in cancer care and develop a strategic plan to retain them.Enhance palliative care capacity through training and dedicated services, including opioid prescription	Policy/Guidelines <ul style="list-style-type: none">Create a National Cancer Control Plan to set national priorities in cancer careDevise a priority-based cancer drug authorization/ reimbursement plan	Evidence-based decision making <ul style="list-style-type: none">Increase efforts to measure the burden of cancer through population-based registriesPromote evidence-based decision-making, data quality improvement, and efficient healthcare practices
--	--	--	---